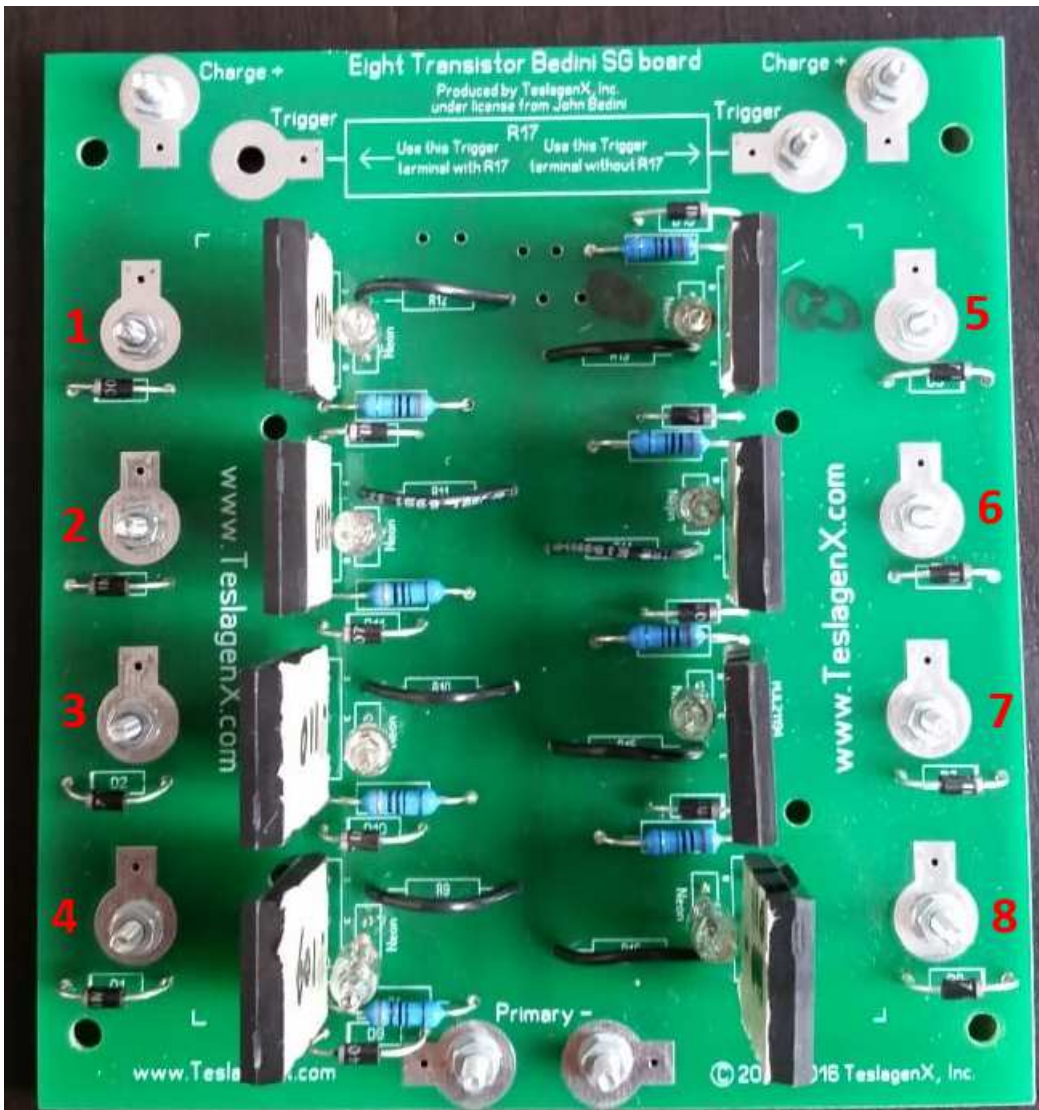
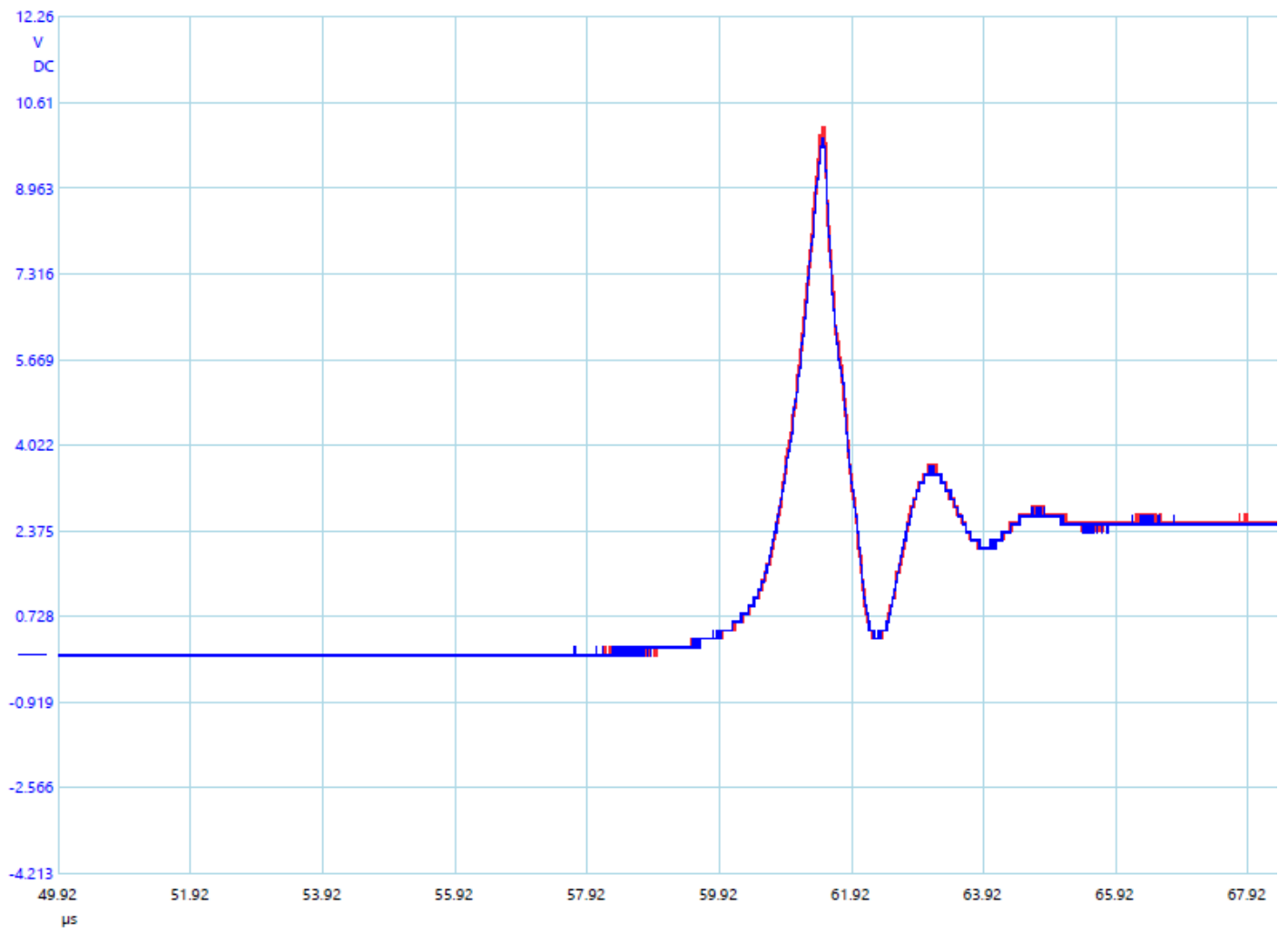


Transistor / resistor verification

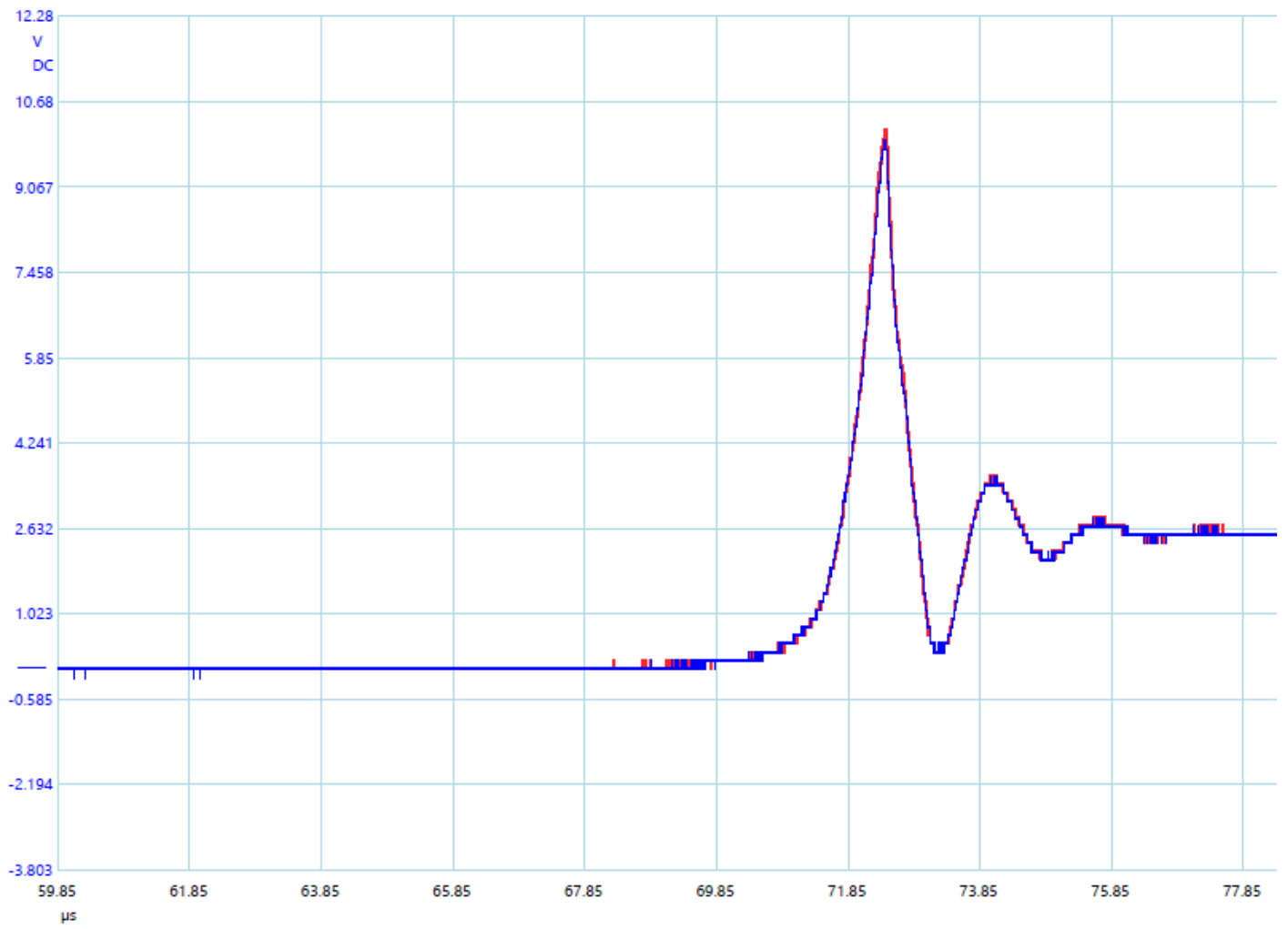


Radiant mode, 12mm gap, Battery LA1 (Flooded)@input, Battery A (AGM)@output, 7 power coils. Input +/-1.5amp
Probe 1: x10, ground to negative of input battery, positive to collector transistor 1
Probe 2: x10, ground not connected, positive to collector transistors 2,3,4,5,6,7

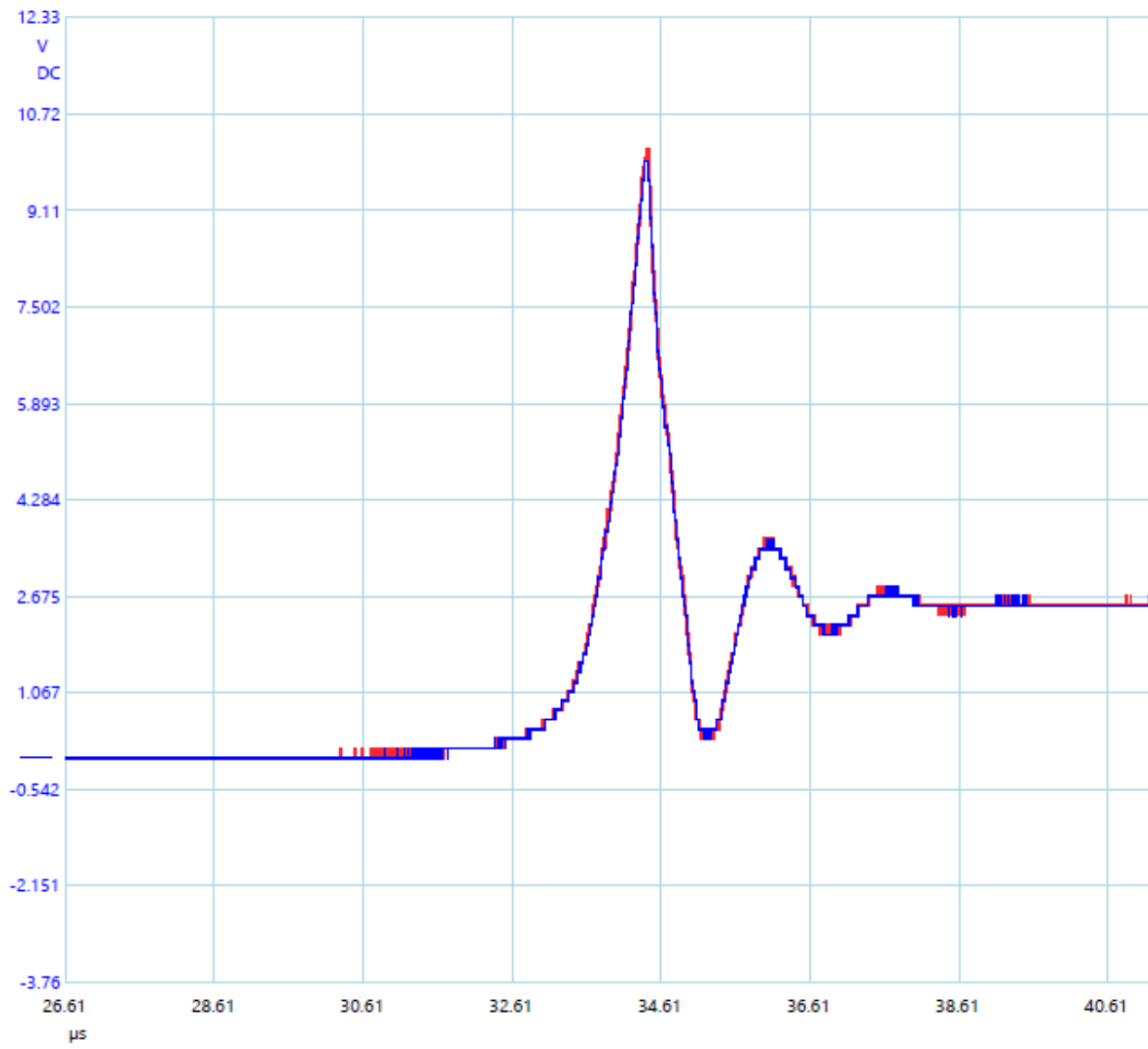
Transistor1 and 2



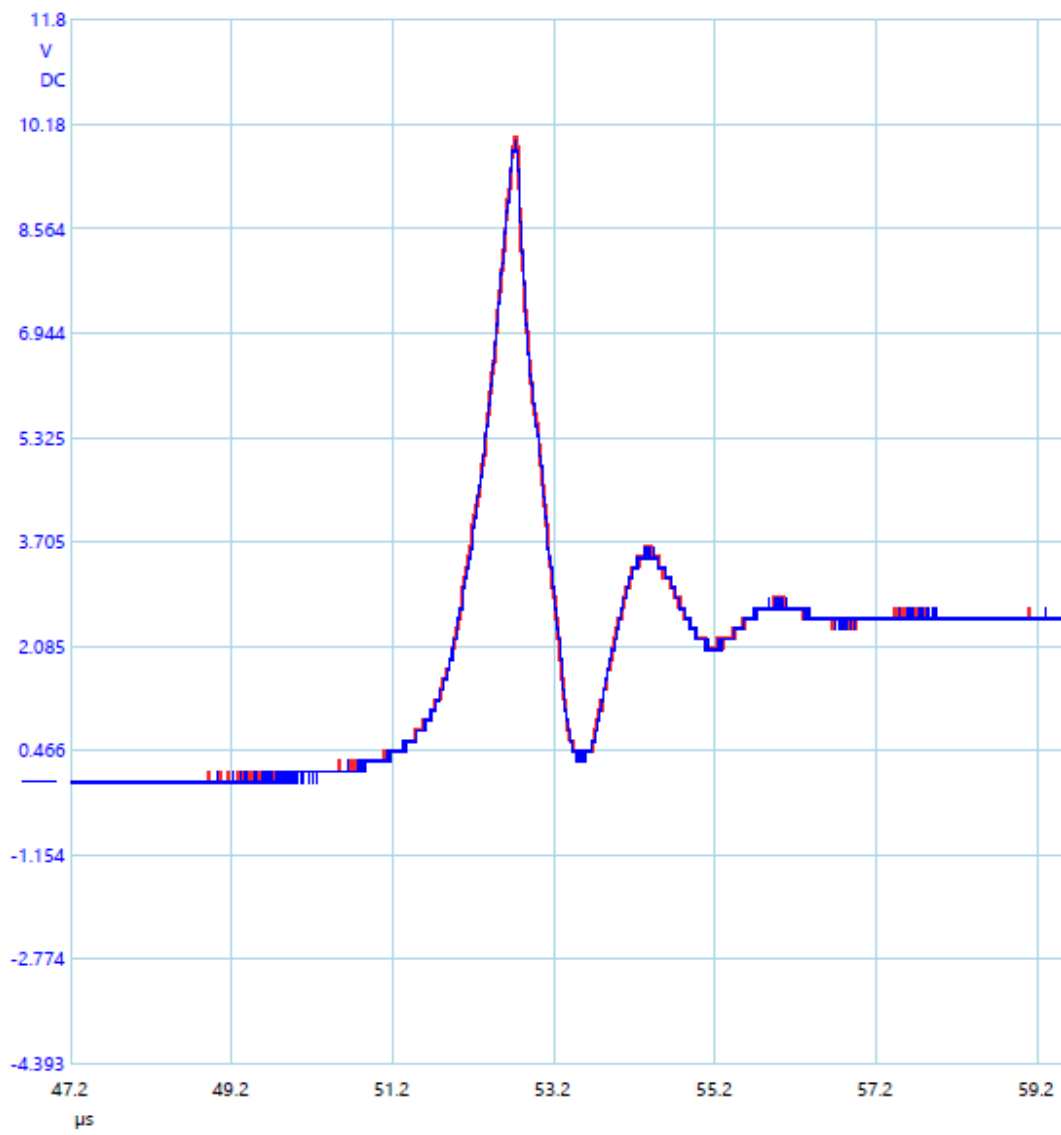
Transistor1 and 3



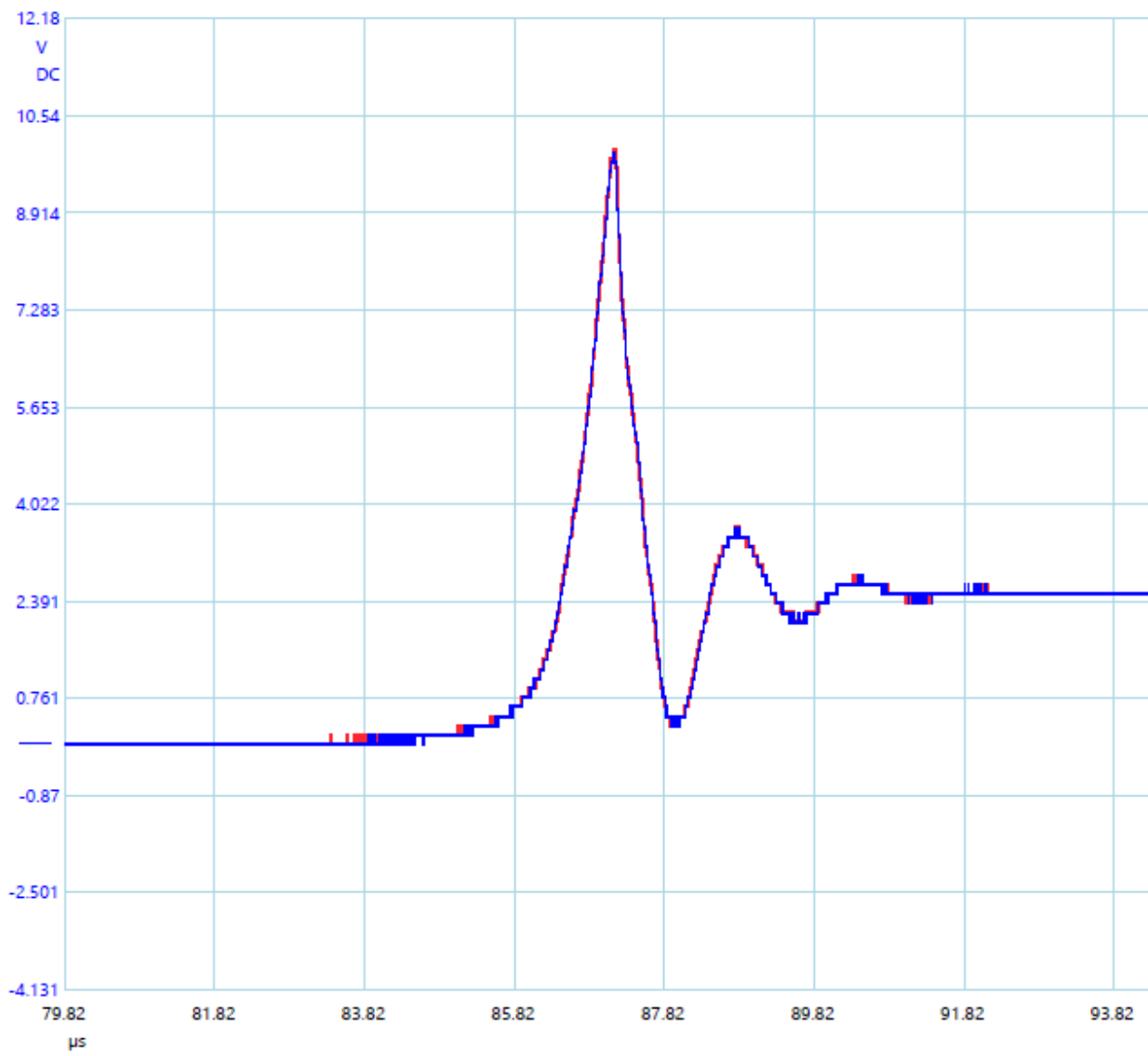
Transistor1 and 4



Transistor1 and 5



Transistor1 and 6



Transistor1 and 7

