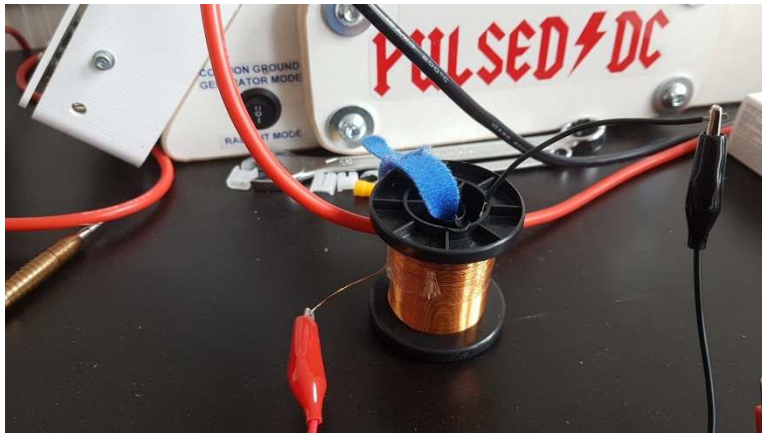
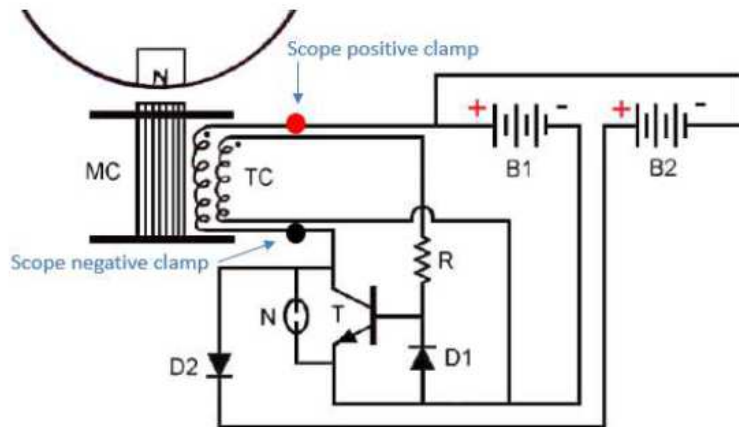


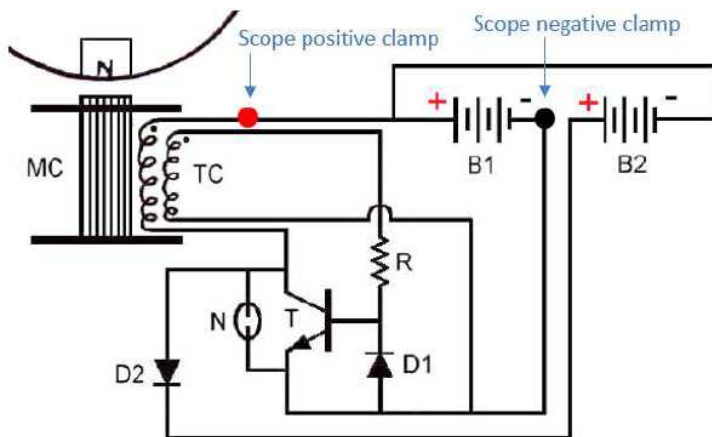
Sniffer coil - red scope trace



Scope signal over 1 coil hookup - blue scope trace



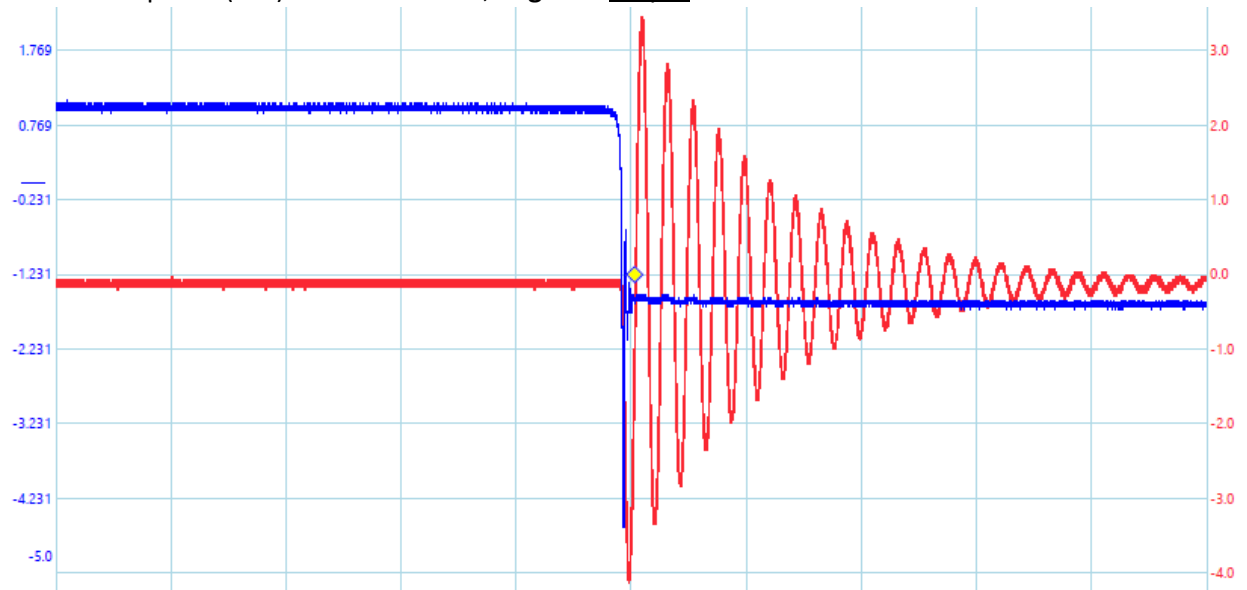
Scope signal over input battery hookup - blue scope trace



M1 – main coil - 20x zoom

Blue trace = probe (x10) over 1 main coil

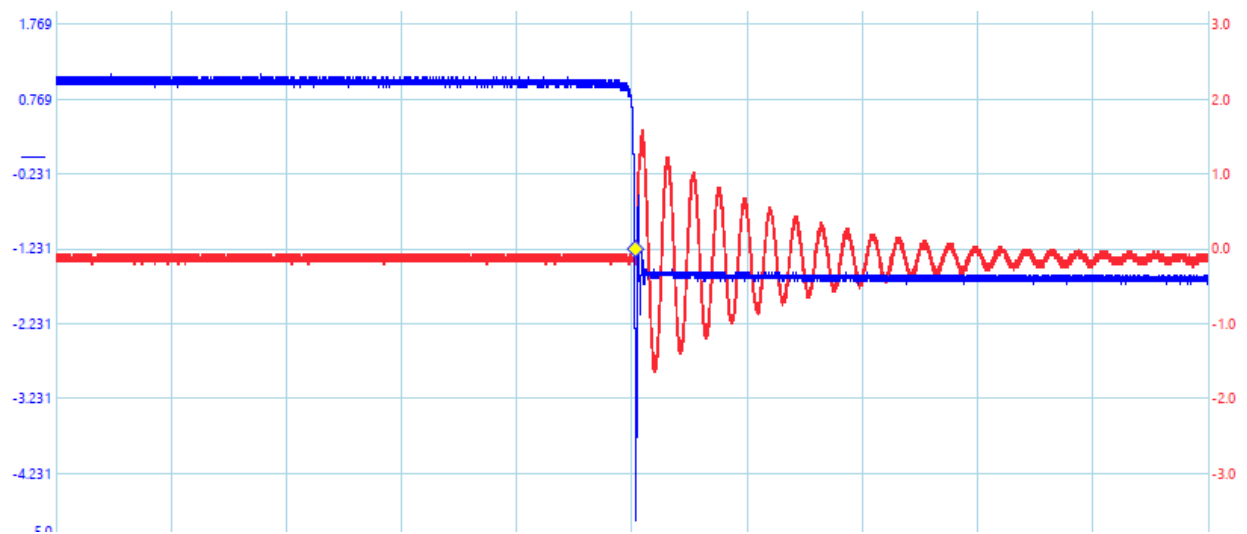
Red trace = probe (x10) over sniffer coil, **negative** output wire



M2 – main coil - 20x zoom

Blue trace = probe (x10) over 1 main coil

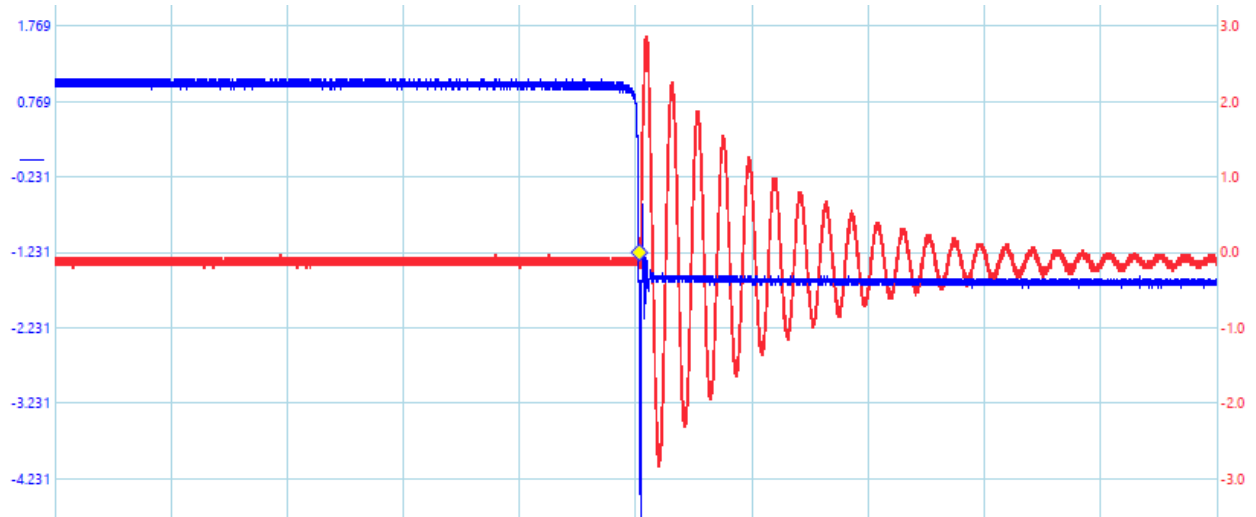
Red trace = probe (x10) over sniffer coil, **positive** output wire



M3 – main coil - 20x zoom

Blue trace = probe (x10) over 1 main coil

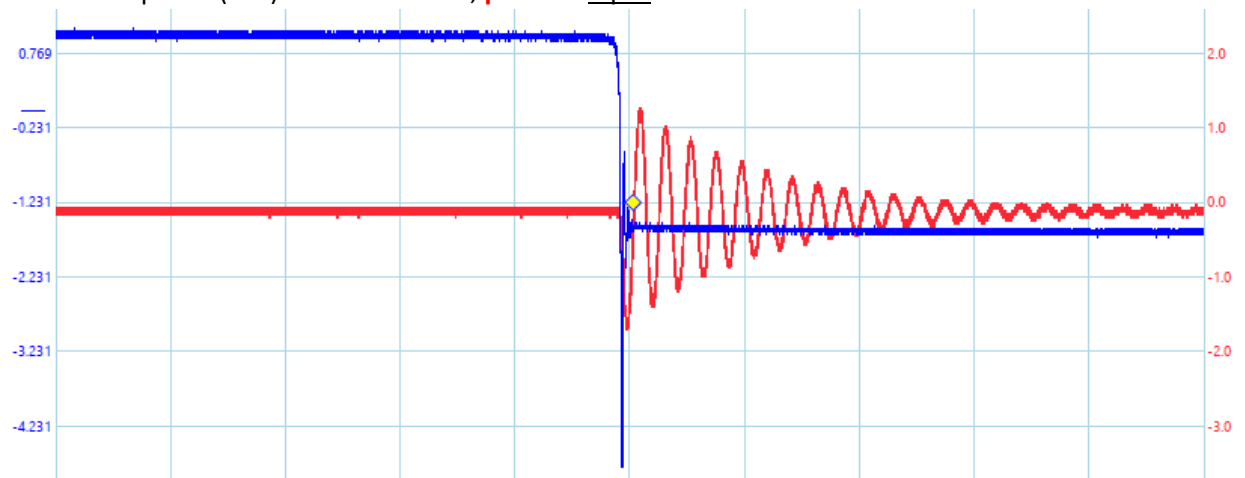
Red trace = probe (x10) over sniffer coil, **negative** input wire



M4 – main coil - 20x zoom

Blue trace = probe (x10) over 1 main coil

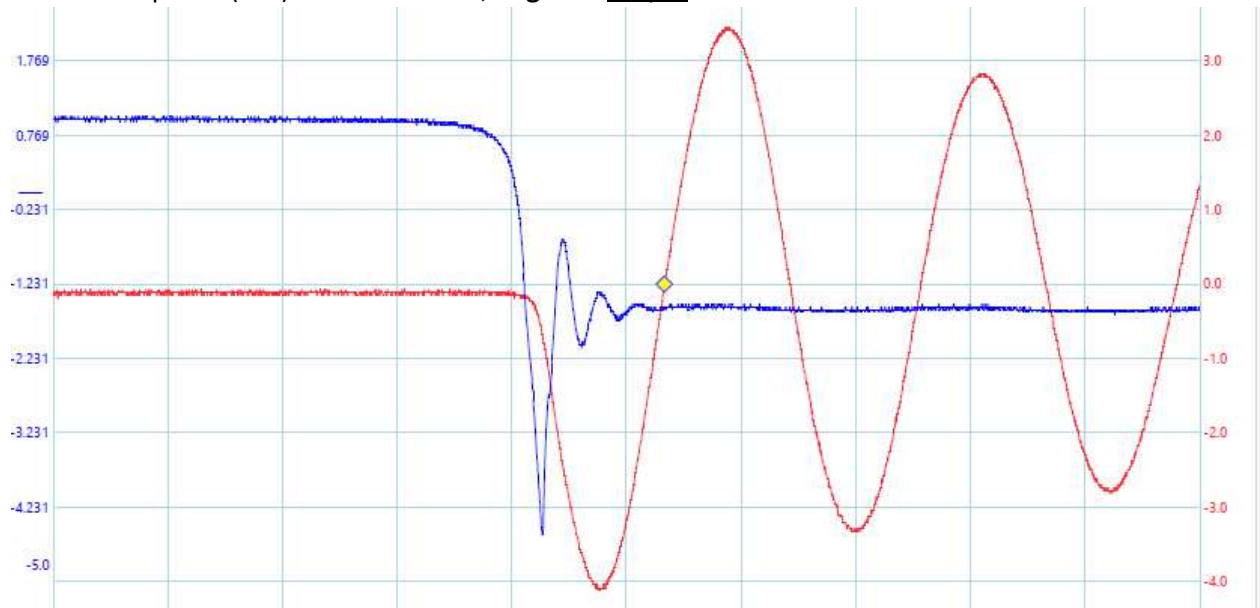
Red trace = probe (x10) over sniffer coil, **positive** input wire



M1.1 – main coil - 200x zoom

Blue trace = probe (x10) over 1 main coil

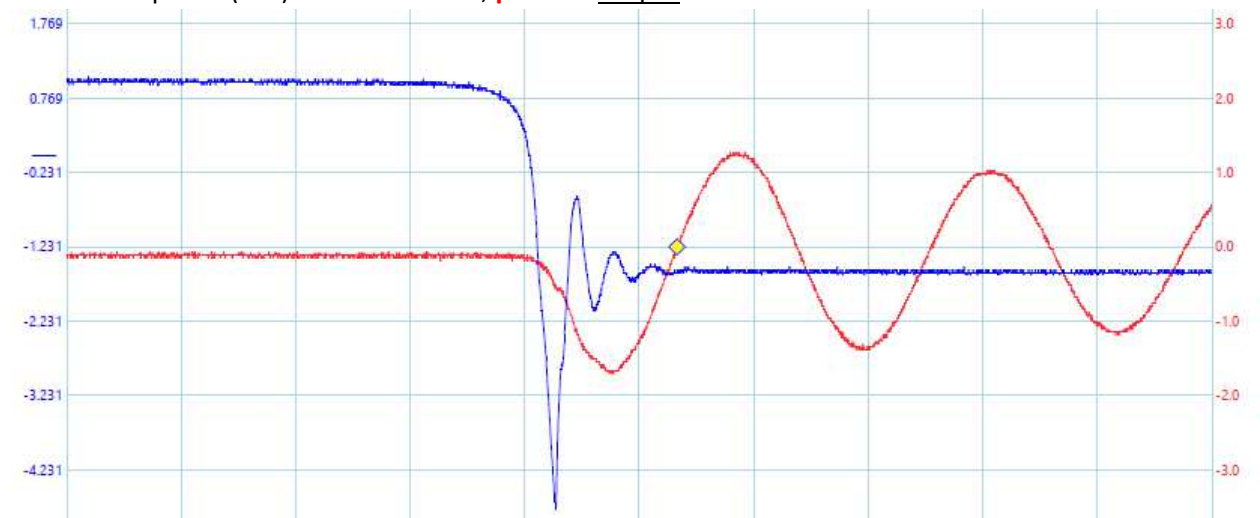
Red trace = probe (x10) over sniffer coil, **negative** output wire



M2.1 – main coil - 200x zoom

Blue trace = probe (x10) over 1 main coil

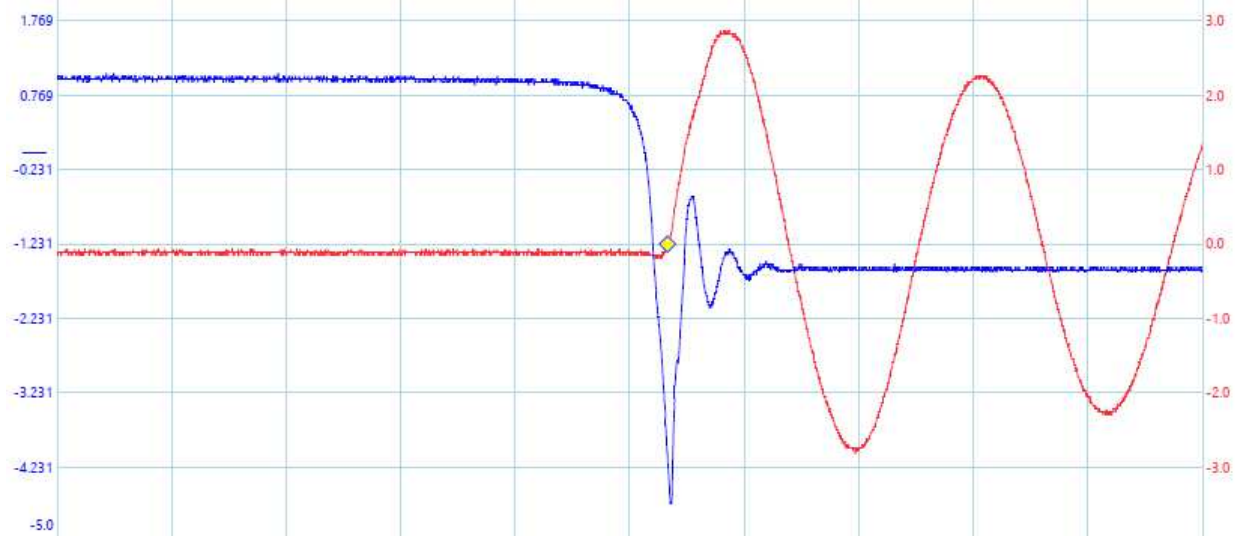
Red trace = probe (x10) over sniffer coil, **positive** output wire



M3.1 – main coil - 200x zoom

Blue trace = probe (x10) over 1 main coil

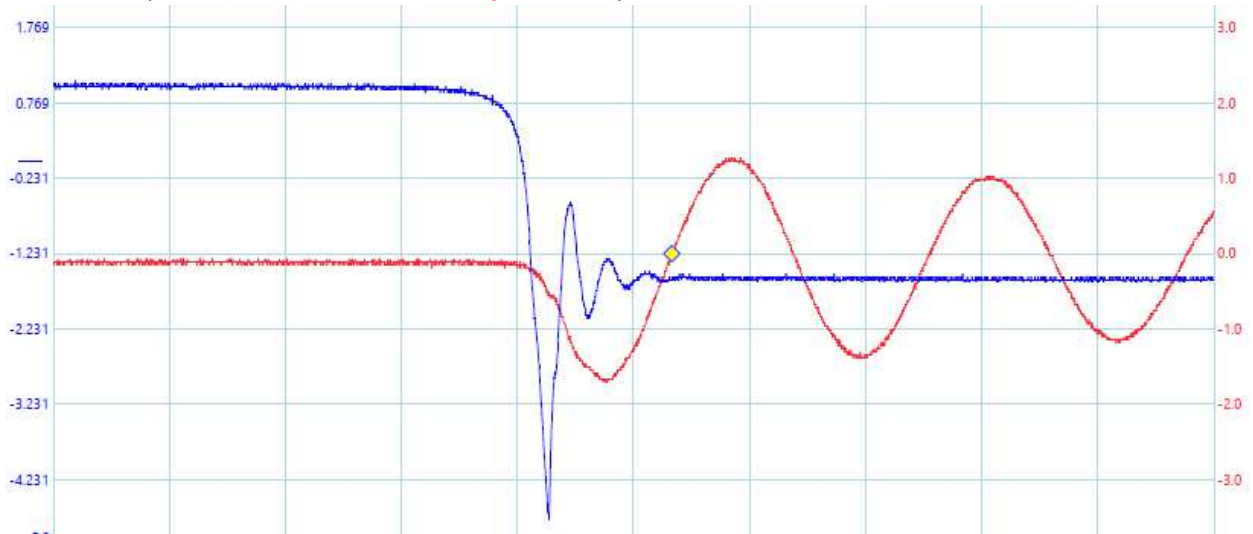
Red trace = probe (x10) over sniffer coil, **negative** input wire



M4.1 – main coil - 200x zoom

Blue trace = probe (x10) over 1 main coil

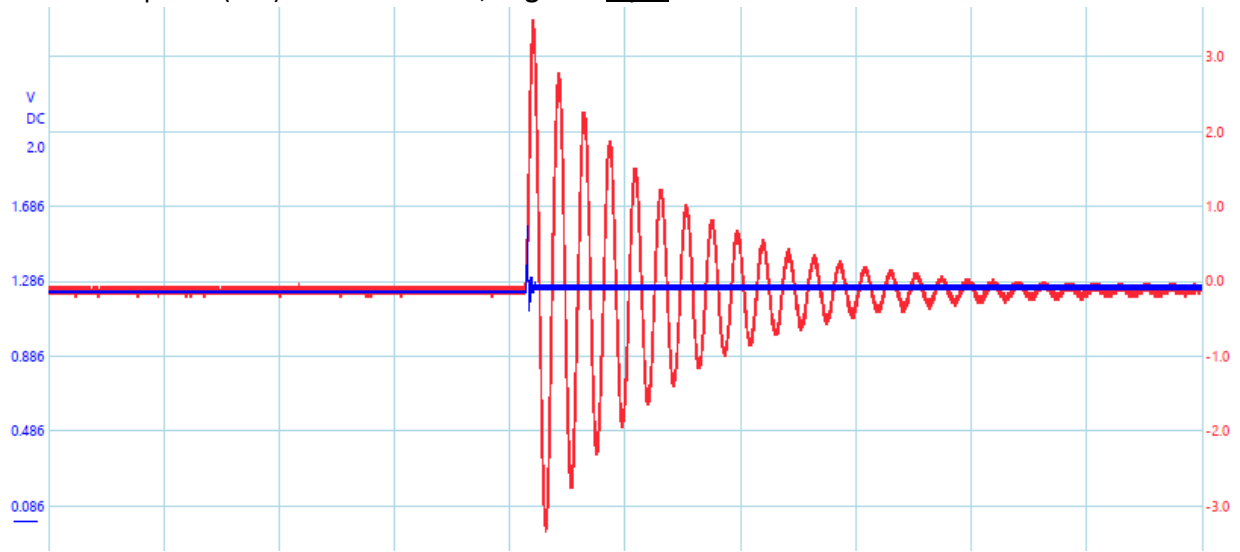
Red trace = probe (x10) over sniffer coil, **positive** input wire



M5 – input battery - 20x zoom

Blue trace = probe (x10) over input battery

Red trace = probe (x10) over sniffer coil, **negative** input



M6 – input battery - 20x zoom

Blue trace = probe (x10) over input battery

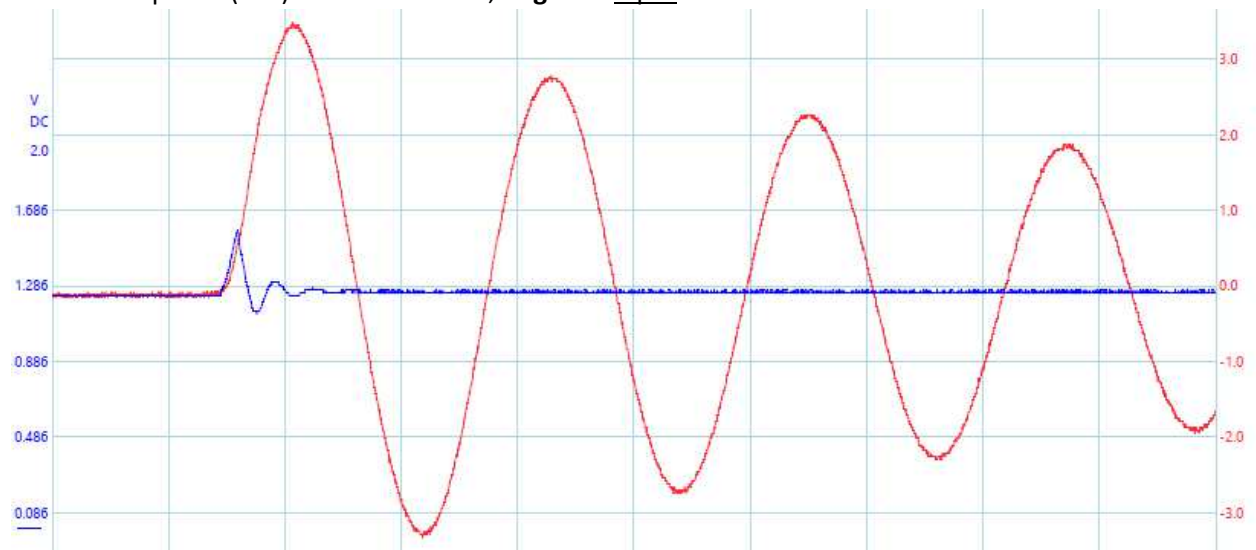
Red trace = probe (x10) over sniffer coil, **positive** input wire



M5.1 – input battery - 200x zoom

Blue trace = probe (x10) over input battery

Red trace = probe (x10) over sniffer coil, **negative** input wire



M6.1 – input battery - 200x zoom

Blue trace = probe (x10) over input battery

Red trace = probe (x10) over sniffer coil, **positive** input wire

